

The Role of the National Center: Rethinking IPE Through the New Models of Care

Mary Beth Bigley

Barbara F. Brandt

Maryjoan Ladden

George Thibault

Marybeth Sharpe—In spirit

Health Resources and Services Administration

National Center for Interprofessional Practice & Education

Robert Wood Johnson Foundation

Josiah Macy Jr. Foundation

Gordon and Betty Moore Foundation

The National Center for Interprofessional Practice and Education

nexusipe.org

2

BUILDING A NEXUS FOR BETTER CARE, ADDED VALUE AND HEALTHIER COMMUNITIES

LOG IN REGISTER



NATIONAL CENTER for
INTERPROFESSIONAL PRACTICE
and EDUCATION

INFORMING

CONNECTING

ENGAGING

ADVANCING

We're shaping the future of our evolving health care landscape by creating a true partnership and shared responsibility between practice and education – what we call the “Nexus” – to enhance the patient experience, improve population health and lower costs.



1,424

IPE
RESOURCES

INFORMING

Browse resources and stories and learn about us and the Nexus.

1,967

COMMUNITY
MEMBERS

CONNECTING

View the member directory, scan resource collections and join a group discussion.

37

EDUCATIONAL
OFFERINGS

ENGAGING

Find an educational opportunity and the latest IPE events.

18

RESEARCH
PROJECTS

ADVANCING

Learn about work occurring at sites across the U.S. and read our latest research.

The National Center for Interprofessional Practice and Education is supported by a Health Resources and Services Administration Cooperative Agreement Award No. UE5HP25067. The National Center is also funded in part by the Josiah Macy Jr. Foundation, the Robert Wood Johnson Foundation, the Gordon and Betty Moore Foundation and the University of Minnesota. © 2015 Regents of the University of Minnesota, All Rights Reserved.

UNIVERSITY OF MINNESOTA



- **A public-private partnership: How did the National Center come to be, and what is it all about?**
- **Commitment to new models of care and a culture of health**
- **Igniting the IPE Movement: Time to activate**



The “New” IPE

Interprofessional Practice and Education



We believe high-functioning teams can improve the experience, outcomes and costs of health care.

National Center for Interprofessional Practice and Education is studying and advancing the way stakeholders in health work and learn together.

National Center Funders

- Health Resources and Services Administration Cooperative Agreement Award No. UE5HP25067
 - Robert Wood Johnson Foundation
 - Gordon and Betty Moore Foundation
 - Josiah Macy Jr. Foundation

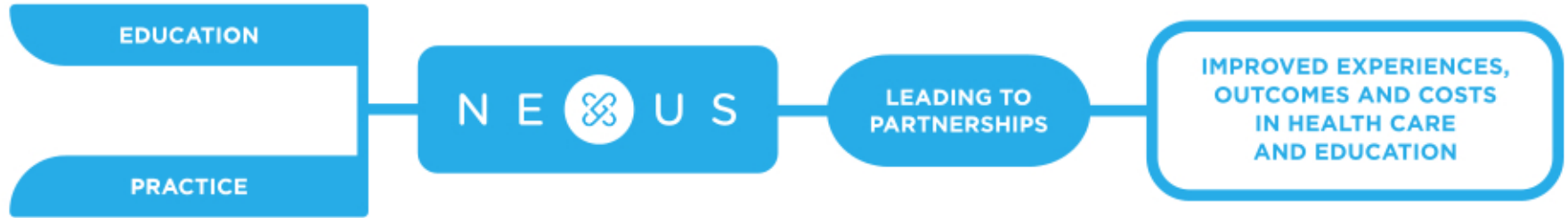


To provide the **leadership**, **evidence** and **resources** needed to guide the nation on the use of interprofessional practice and education as a way to enhance the experience of health care, improve population health, and reduce the overall cost of care.



The Nexus: Our Vision for Health

7



- Improving quality of experience for patients, families, communities and learners
- Sharing responsibility for achieving health outcomes and improving education
- Reducing cost and adding value in health care delivery and education

The National Center for Interprofessional Practice and Education is supported by a Health Resources and Services Administration Cooperative Agreement Award No. UE5HP25067. The National Center is also funded in part by the Josiah Macy Jr. Foundation, the Robert Wood Johnson Foundation, the Gordon and Betty Moore Foundation and the University of Minnesota. © 2015 Regents of the University of Minnesota, All Rights Reserved.

UNIVERSITY OF MINNESOTA



How did the National Center come to be?

8

George Thibault, M.D.

President, Josiah Macy Jr. Foundation

The National Center for Interprofessional Practice and Education is supported by a Health Resources and Services Administration Cooperative Agreement Award No. UE5HP25067. The National Center is also funded in part by the Josiah Macy Jr. Foundation, the Robert Wood Johnson Foundation, the Gordon and Betty Moore Foundation and the University of Minnesota. © 2015 Regents of the University of Minnesota, All Rights Reserved.

UNIVERSITY OF MINNESOTA



Collaborating Across Borders

**Becky Spitzgo, Associate Administrator,
Bureau of Health Workforce
RSpitzgo@hrsa.gov**

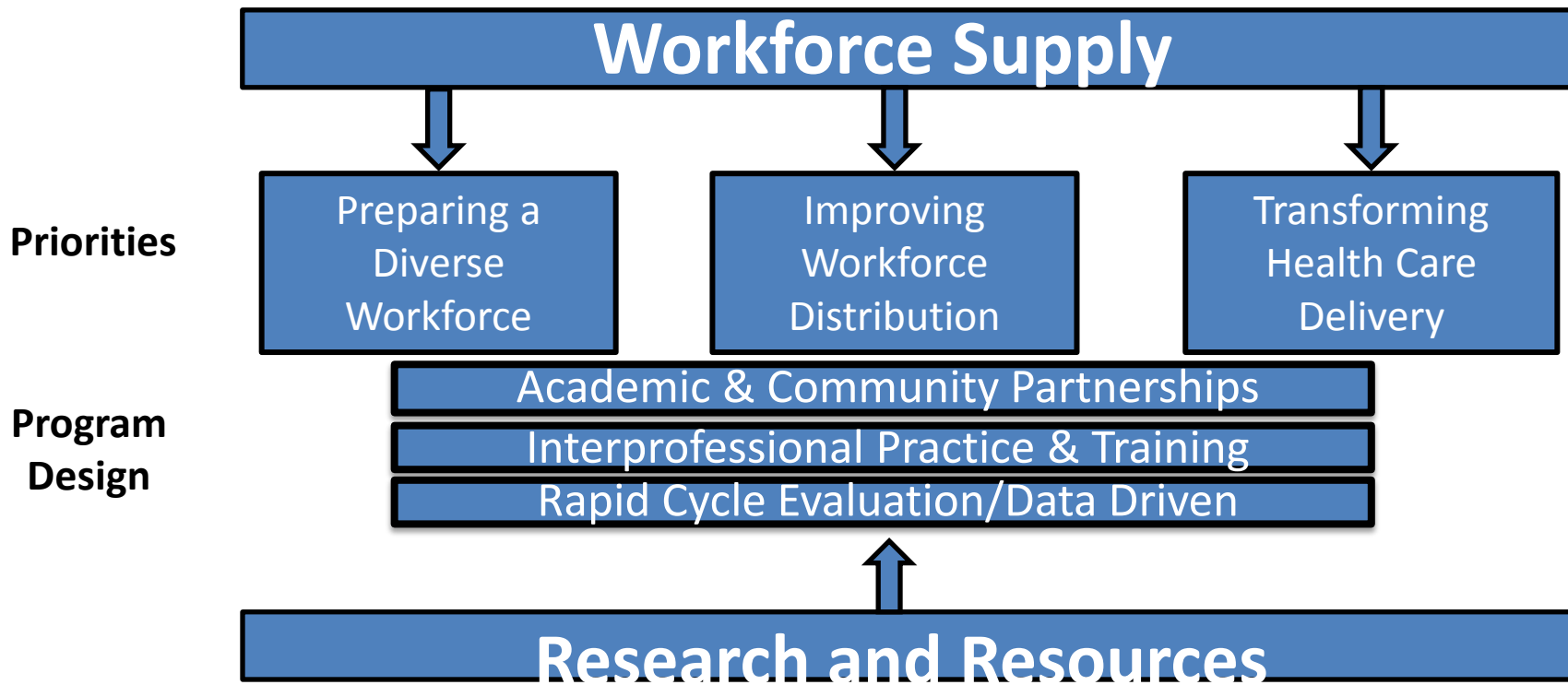
HRSA Mission

Improving health and health equity through access to quality services, a skilled health workforce and innovative programs.

Bureau of Health Workforce Mission



Bureau of Health Workforce



Transforming Health Care Delivery

Modern Care - Improved Outcomes & Lower Costs

Changing service delivery to meet 21st century needs through an emphasis on quality care that encourages innovative team-based and interprofessional approaches.

Our programs serve as a catalyst to advance changes in health professions training that are responsive to the evolving needs of the health care system.



- In Academic Year 2013-14, 12 BHW programs had an interprofessional focus. Within those programs 1,315 clinical training sites were engaged in interprofessional team-based care.*

FY 2015/2016 Funding Opportunity Highlights

Geriatrics
Workforce
Enhancement
Program

NEPQR
Interprofessional
Collaborative
Practice

Predoctoral
Postdoctoral Oral
Health Training

NEPQR BSN
Practicums in
Community
Settings

Graduate
Psychology
Education

Primary Care
Training and
Enhancement
Program

Advance
Nursing
Education



National Center for Interprofessional Practice and Education

- Advance the national agenda
- Drive evidence-based practice
- Inform health system redesign
- Support a robust data collection platform
- Serve as “go-to” source for information and leadership
- Maintain “finger on the pulse” of the delivery system reform



NATIONAL CENTER for
INTERPROFESSIONAL PRACTICE
and EDUCATION

FY 2016 GRANTS BULLETIN

BUREAU OF HEALTH WORKFORCE | SEPTEMBER 2015

The Bureau of Health Workforce (BHW) improves the health of the underserved and vulnerable populations by strengthening the health workforce and connecting skilled professionals to communities in need. To learn all about BHW's programs, please visit the Bureau website.

PROGRAMS	WHO IS ELIGIBLE				DISCIPLINE*				EST. RELEASE**
	STATE OR LOCAL GOVERNMENT	PUBLIC OR PRIVATE NON-PROFIT ORGANIZATION	HEALTHCARE FACILITY	ACADEMIC INSTITUTION	MEDICAL	NURSING	MENTAL AND BEHAVIORAL	DENTAL	
Nurse Anesthetist Traineeship Program (NAT)	✓	✓	✓	✓		✓			Sept 2015
Nurse Faculty Loan Program (NFLP)				✓					Sept 2015
Nursing Workforce Diversity (NWD)		✓	✓	✓		✓			Sept 2015
NEPQR- Interprofessional Collaborative Practice			✓	✓		✓	✓		Oct 2015
Ruth L. Kirschstein National Research Service Awards		✓	✓	✓	✓				Oct 2015
Graduate Psychology Education	✓	✓	✓	✓			✓		Oct 2015
Primary Care Training and Enhancement		✓	✓	✓	✓				Oct 2015
NEPQR-BSN Practicum in Community Settings			✓	✓		✓			Oct 2015
Rural Residency Planning & Development		✓	✓	✓	✓				Nov 2015
Scholarships for Disadvantaged Students ***				✓	✓	✓	✓	✓	Nov 2015
Advanced Nursing Education (ANE)	✓	✓	✓	✓		✓			Nov 2015
Academic Administrative Units in Primary Care				✓					Nov 2015
Grants to States to Support Oral Health Workforce Activities	✓							✓	Dec 2015
Advanced Education Nursing Traineeship		✓		✓		✓			Dec 2015

*Indicates primary disciplines, however many programs are encouraging and supporting interprofessional education.

**Grants are open only once per year. Dates of grant openings are subject to change without notice. Additional grant opportunities may become available throughout the year.

***Additional listed Disciplines: Pharmacy, Podiatric Medicine, Optometry, Allied Health, Veterinary Medicine & Chiropractic.

QUESTIONS?



Maryjoan Ladden, PhD, RN, FAAN
Senior Program Officer, Human Capital Portfolio
Robert Wood Johnson Foundation



The National Center: Igniting the IPE Movement

18

Barbara F. Brandt, PhD, Director
National Center for Interprofessional Practice and Education
Associate Vice President for Education, University of
Minnesota Academic Health Center

The National Center for Interprofessional Practice and Education is supported by a Health Resources and Services Administration Cooperative Agreement Award No. UE5HP25067. The National Center is also funded in part by the Josiah Macy Jr. Foundation, the Robert Wood Johnson Foundation, the Gordon and Betty Moore Foundation and the University of Minnesota. © 2015 Regents of the University of Minnesota, All Rights Reserved.

UNIVERSITY OF MINNESOTA



What will be the impact on workforce of Secretary Burwell's announcement on value-based payment goals?

19

Principles:

Incentives to motivate higher value care

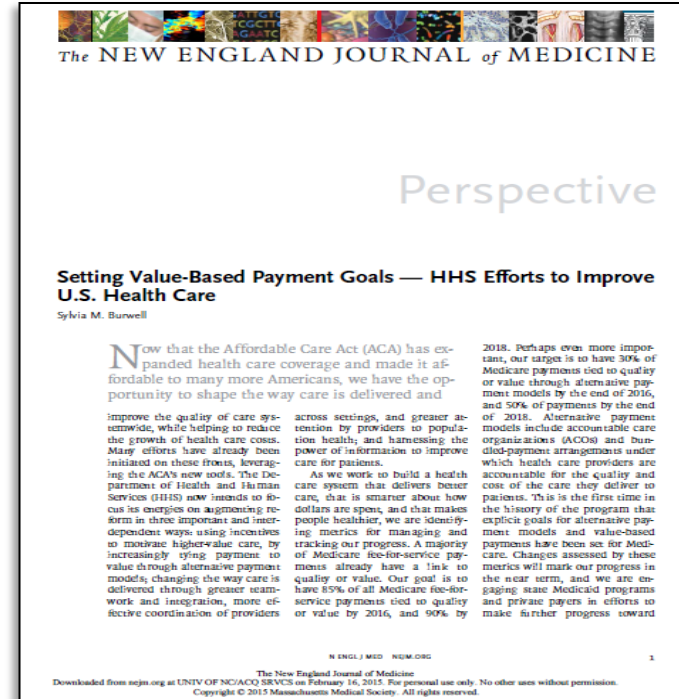
Alternative payment models

Greater teamwork and integration

More effective coordination of providers across settings

Greater attention to population health

Harness the power of information to improve care for patients



Building the Workforce for New Models of Care

20

Learner Pipeline

Today I owe:



Health Workforce for New Models of Care

How do we create a health workforce in the right locations, specialties and practice settings that has the skills and competencies needed to meet the demands of a transformed health care system while preventing burnout?

Patients, Families & Communities

How do we improve the patient experience of care, improve the health of populations, and reduce the per capita cost of health care simultaneously?



- Resource Center (nexusipe.org)
- Presentations, workshops, training
- Peer-reviewed publications and reports
- Organizational consultations
- A growing Nexus Innovations Network
- Data collection in a National Center Data Repository
- Support for the American Interprofessional Health Collaborative



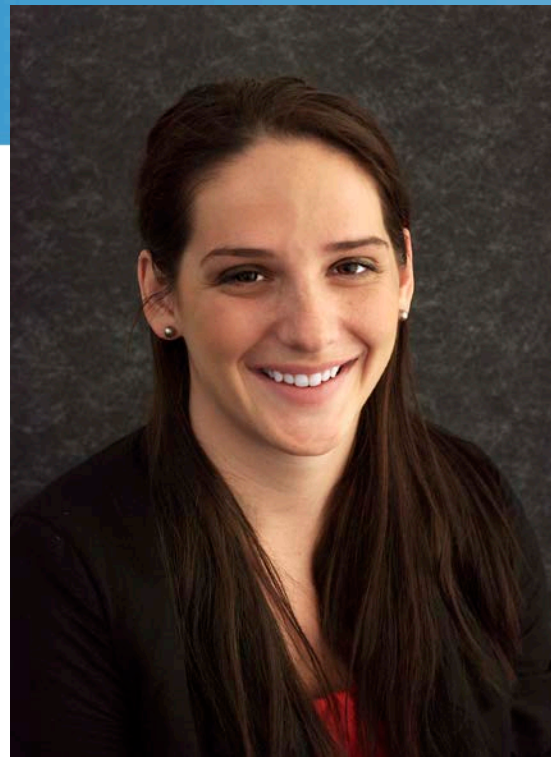
Engage with the Resource Center

Join the movement at nexusipe.org

asknexus@umn.edu for inquiries

Many tools and resources available – webinars, online modules, publications, tools, presentations and more...

Become the 2,000th profile: The National Center will support your AIHC membership



Meet Meghan Rosenkranz

The National Center for Interprofessional Practice and Education is supported by a Health Resources and Services Administration Cooperative Agreement Award No. UE5HP25067. The National Center is also funded in part by the Josiah Macy Jr. Foundation, the Robert Wood Johnson Foundation, the Gordon and Betty Moore Foundation and the University of Minnesota. © 2015 Regents of the University of Minnesota, All Rights Reserved.

UNIVERSITY OF MINNESOTA



Supporting the IPE movement...

23

Sample of speaking, consultations and partnerships since Spring 2015

American Medical Association Accelerating Change in Medical Education

Association of Nurse Professional Development

Association of Specialized and Professional Accreditors

Centers for Medicare and Medicaid Innovations

Institute of Medicine

Macy Faculty Development Program

National Advisory Council on Nurse Education and Practice

National Association of Community Health Centers

National Governors Association

National Health Policy Forum

National Quality Forum

Patient-Centered Primary Care Collaborative

University of North Carolina Cecil G. Shep Center

VA Centers of Excellence in Primary Care

1199 SEIU Funds



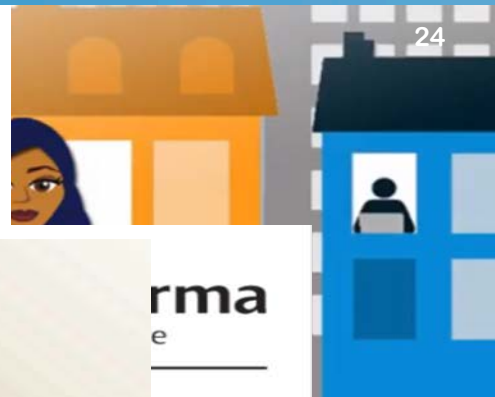
... and growing

The National Center for Interprofessional Practice and Education is supported by a Health Resources and Services Administration Cooperative Agreement Award No. UE5HP25067. The National Center is also funded in part by the Josiah Macy Jr. Foundation, the Robert Wood Johnson Foundation, the Gordon and Betty Moore Foundation and the University of Minnesota. © 2015 Regents of the University of Minnesota, All Rights Reserved.

UNIVERSITY OF MINNESOTA



■ Interprofessional Education and Collaborative Practice: Welcome to the “New” Forty-Year Old Field



EVALUATING INTERPROFESSIONAL EDUCATION AND COLLABORATIVE PRACTICE:

*What Should I Consider
When Selecting a
Measurement Tool?*

assessment. The actual sphere of influence of this research has been limited. Often discussed separately, this paper places IPE and CP in the same conceptual space. The interface of these form a nexus where new knowledge creation may be facilitated. Rigorous research on IPE in relation to CP that is relevant to and framed by health system reform in the United States (US) is the ultimate research goal of the National Center for Interprofessional Practice and Education at the University of Minnesota. This paper describes the direction and scope for a focused and purposive IPECP research agenda linked to improvement in health outcomes, contextualized by

History

Received 6 October 2014
Revised 1 April 2015
Accepted 10 April 2015
Published online 31 July 2015

EDITED BY STEVEN A. WARTMAN, MD, PHD, MACP

nal Practice and Education, University of Minnesota, Minneapolis,
004@umn.edu (J.P.); cerra001@umn.edu (F.C.);
@umn.edu (C.D.)

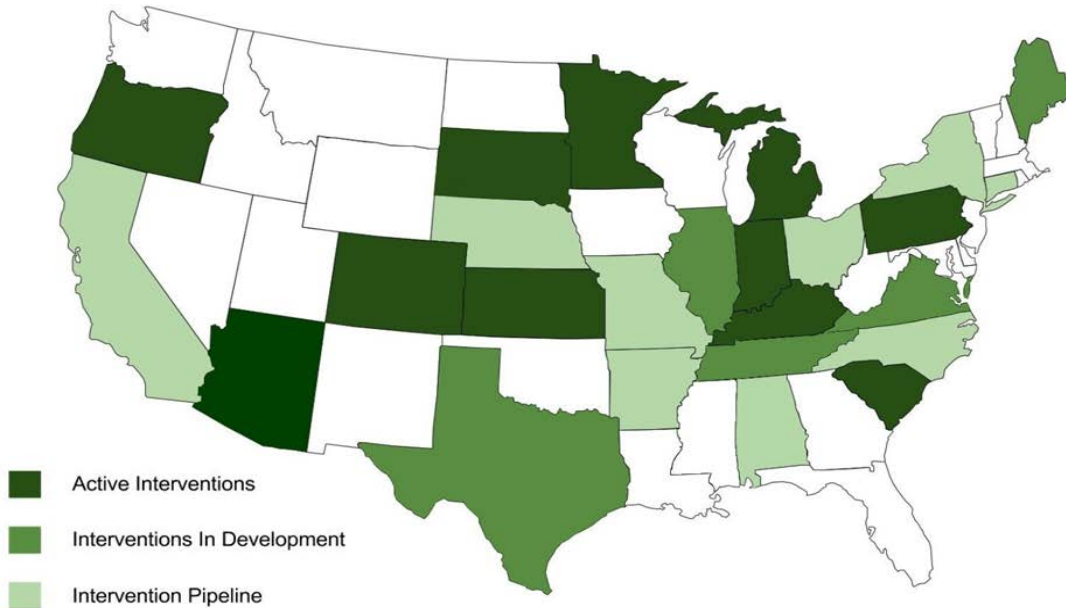
OPEN ACCESS

care

N 2227-9032
al/healthcare

SS
tive
and a

Delaney



The National Center for Interprofessional Practice and Education is supported by a Health Resources and Services Administration Cooperative Agreement Award No. UE5HP25067. The National Center is also funded in part by the Josiah Macy Jr. Foundation, the Robert Wood Johnson Foundation, the Gordon and Betty Moore Foundation and the University of Minnesota. © 2015 Regents of the University of Minnesota, All Rights Reserved.

UNIVERSITY OF MINNESOTA



By igniting the IPE Movement today,

we are nurturing tomorrow's interprofessional leaders of health systems and health professions education organizations including the National Center for Interprofessional Practice and Education.

And insuring that new models of care are no longer “new”.



Let the party begin!

**Hat designed by The Gift Niche
Roanoke, VA**



The National Center for Interprofessional Practice and Education is supported by a Health Resources and Services Administration Cooperative Agreement Award No. UE5HP25067. The National Center is also funded in part by the Josiah Macy Jr. Foundation, the Robert Wood Johnson Foundation, the Gordon and Betty Moore Foundation and the University of Minnesota. © 2015 Regents of the University of Minnesota, All Rights Reserved.



The IPE movement is in motion...

- Collaborating Across Borders hosts from Minneapolis, Halifax, Tucson, Vancouver and Roanoke
- CAB V planning committee members
- Team members of the Nexus Innovations Network and their partnering organizations
- Macy Faculty Scholars
- Robert Wood Johnson Foundation scholars
- HRSA IPE grantees
- Grantees implementing interprofessional practice and education programs
- Funders of interprofessional practice and education efforts



The IPE movement is in motion...

- Leaders and teams of centers of interprofessional practice and education implementing large-scale transformation
- Accreditors who have written standards incorporating interprofessional practice and education
- AIHC and CIHC board members (past and present)
- Organizations advocating for interprofessional practice and education
- Individuals with a National Center profile
- National Center staff and advisors
- Individuals who are committed to taking what they have learned at CAB V to implement at home



Activating the IPE Movement:

Make your commitment today!

30

- Create a profile on the Resource Center – and encourage a friend to do the same
- Contribute a presentation, tool, publication or other resource to the growing collection
- Share your experience with an existing resource by making a comment or posing a question
- Mentor a colleague or student with interprofessional interests
- Submit your scholarly work to IPEC MedEd Portal for peer review
- Become an ambassador of the National Center to share the latest evidence, resources and services with the growing community
- Submit a story or blog about your IPE journey to share with the National Center community
- Define how your interprofessional effort is incorporating actionable measurement to facilitate knowledge, evidence and sustainable change
- Submit your interprofessional program outcomes to disciplinary venues for broader engagement, dialogue and acceptance
- Join the American Interprofessional Health Collaborative as a charter member
- Publish, Publish, Publish!

The National Center for Interprofessional Practice and Education is supported by a Health Resources and Services Administration Cooperative Agreement Award No. UE5HP25067. The National Center is also funded in part by the Josiah Macy Jr. Foundation, the Robert Wood Johnson Foundation, the Gordon and Betty Moore Foundation and the University of Minnesota. © 2015 Regents of the University of Minnesota, All Rights Reserved.

UNIVERSITY OF MINNESOTA



A few more opportunities to join the movement

31

Become a National Center Ambassador

Join us for a webinar on October 22 to learn more!

Attend the 1st annual Nexus Summit in Sept. 2016

Join colleagues in health systems and education from across the US as we share the latest research, evidence and best practices in IPE!





NATIONAL CENTER *for*
INTERPROFESSIONAL PRACTICE
and EDUCATION